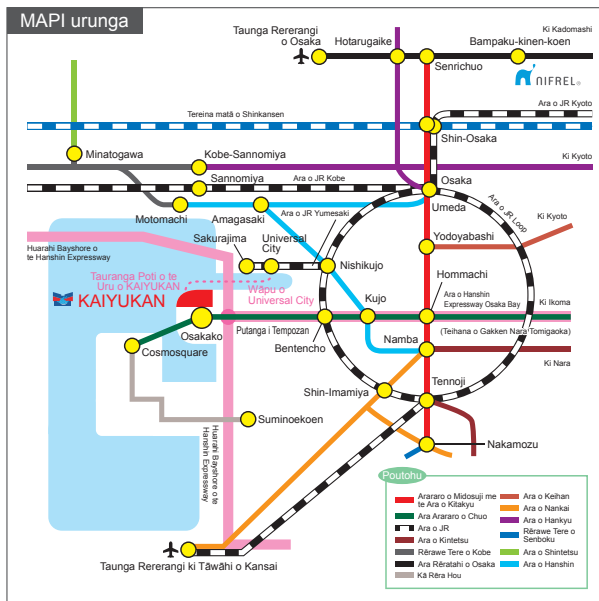


海遊館 OSAKA AQUARIUM KAIYUKAN

Aratohu o te Pā o Te Whanga o Tempozan

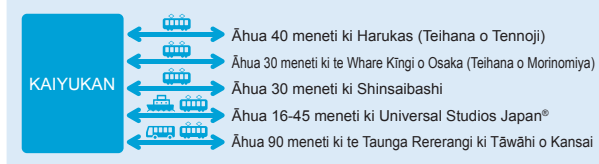


- Ngā Haora Kauranga Ika / 10:00 a.m. ~ 8:00 p.m. (7:00 p.m. te whakaurunga whakamutunga)
Kia mōhio:
* Ka rerekē pea e ai ki te wāhanga tau.
* Ka katia te kauranga ika i ētahi rā i te Kohitātea (Mō te 2 rā).
- Utu Kuhu Atu / Pakeke (16 tau, pakeke ake, ākonga kura tuarua) 2,700 yen
Tamaiti (Kura tuatahi me te takawaenga) 1,400 yen
Tamaiti kura kōhungahunga (3 tau, pakeke atu) 700 yen
Kia mōhio:
* Mō ngā whakaritenga me ngā uiui e pā ana ki te toro a te rōpū, waea atu ki te taupaeapea Rēhita Toro ā-rōpū i 06-6576-5533.



- <Mā te Tereina> ○Tata ki te 30 min. mai i Osaka (Umeda)
○Tata ki te 30 min. mai i Namba (Shinsaibashi)
○Tata ki te 5 min. hiko mai i te Teihana o "Osakako" i te Arararo o Chuo o te Ara o Osaka
- <Mā te Pahi Tāonenu> ○Tata ki te 40 min. mai i Osaka (Umeda) Pātata ana ki te wāhi tū o "Tempoan Harbor Village"
- <Mai i te Taunga Rererangi ki Tāwāhi o Kansai> ○Tata ki te 65 min. mā runga tereina/60 min. mā te pahi hāneanea haere tika atu
○Mai i te Taunga Rererangi o Osaka: Tata ki te 60 min. mā te tereina

Ngā Mōhiohio Urunga Matua



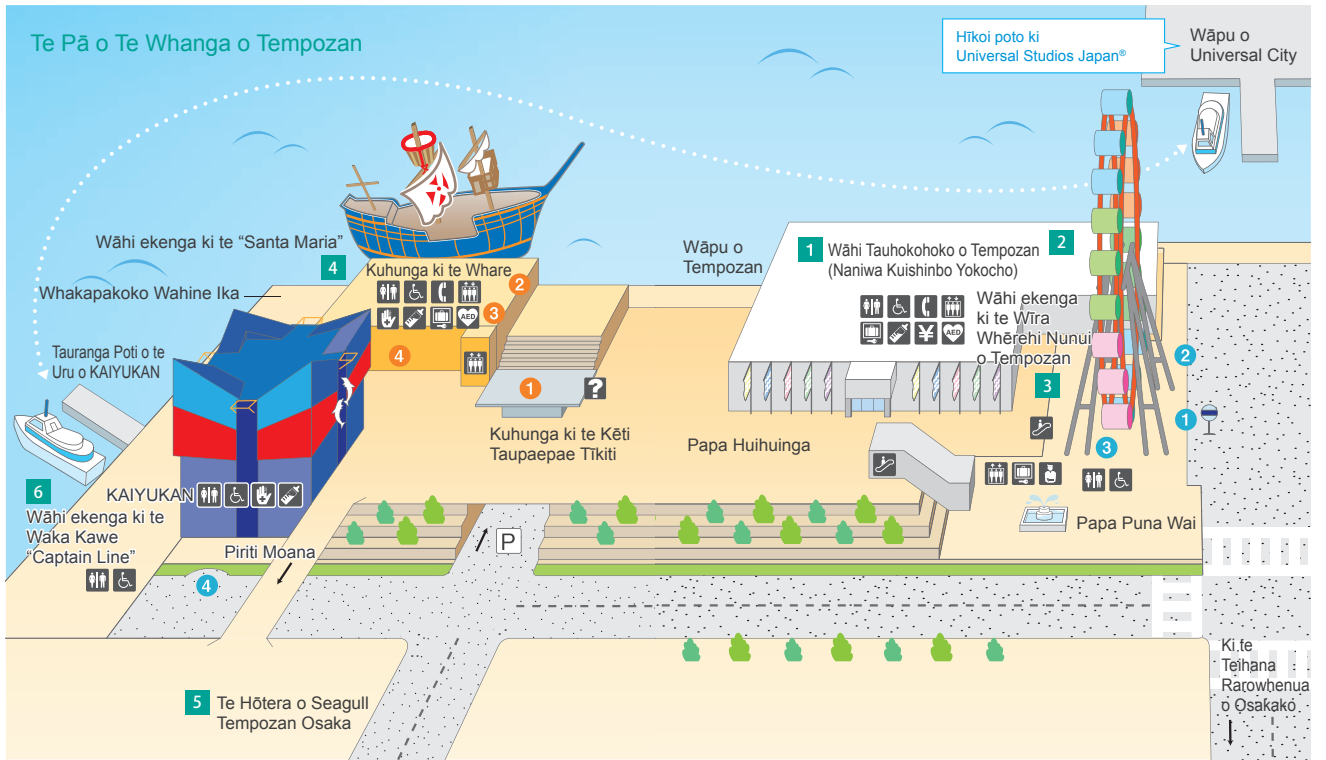
1-1-10 Kaigandori, Minato-ku, Osaka City 552-0022
TEL.06-6576-5501 <https://www.kaiyukan.com/>

● He whai tāke ngā utu kuhunga katoa i runga ake. ● Kāua e kai paipa, kai, inu, ētahi atu mahi rānei i te mea ka whakahōhā pea i ētahi atu manuhiri. ● Kāua e heri mai i ngā matū mōrearea, ētahi atu mea rānei kāore e whakaetia e te kauranga ika ki roto i te wāhi. ● E rāhuitia ana te tango whakaaha, ataata rānei i ētahi taika kauraka ika. Me whai i ngā ture i ngā taika e mau ana i aua pānui. ● Ka huri pea ngā kōrero o tēnei mātātere me te kore e whakamōhio mai.

Te reo Māori

マオリ語

Te Pā o Te Whanga o Tempozan



- ? **Ngā mōhiohio**
- ☎ **Waea utu**
- ✋ **Kete whakaora**
- ✍ **Rūma whāngai pēpi**
- 🏠 **Pouaka rokiroki whakahāere ā-uka**
- ♿ **Wharepaku**
- ♿ **Wharepaku taea-tūru wīra**
- ☎ **Ara kawē**
- ♿ **Ararewa**
- 💰 **Teihana tautiaki**
- 💰 **ATM 11:00 a.m. ~ 9:00 p.m.**
- 🆘 **AED**

- 1 Taupaepae Tikiti
- 2 Rēhita toro ā-rōpū
- 3 Hōro o KAIYUKAN
- 4 Toa Whare Taonga o KAIYUKAN
- 1 Tūnga pahi (Ki te Teihana o Osaka me Namba)
- 2 Tūnga pahi (ki te Taunga Rererangi ki Tāwāhi o Kansai)
- 3 Tūnga mō ngā pahi
- 4 Pahi kawē mō te tūnga wā potu

1 Wāhi Tauhokohoko o Tempozan



Haere ki ngā toa taonga, wharekai, "Naniwa Kuishinbo Yokocho" me ētahi atu toa rawe.

<https://www.kaiyukan.com/thv/marketplace/>
Ngā Haora Pakihi 11:00 a.m. ~ 8:00 p.m.
(Ka rerekē pea e ai ki te wāhanga o te tau, ngā toa rānei)

3 Wīra Whērehi Nunui o Tempozan



Tētahi o ngā wīra whērehi nunui rawa o te ao. I ngā rangi paki, ka pārarekareka ki te tirohanga whānui mai i te Tāonenui o Osaka ki te Piriti o Akashi, ā, ki te Taunga Rererangi ki Tāwāhi o Kansai.

<http://www.senyo.co.jp/tempozan/>

Naniwa Kuishinbo Yokocho

Ko te wāhi tauhokohoko me te wāhi whakangahau ake o Osaka mai i te 1965 – he pāka kai e whakahiatu mai ana i ngā toa rongonui tūroa e whakarato ana i ngā kai reka rawa.



2 LEGOLAND® Discovery Center Osaka

Tirohia te ao o ngā Pereki Lego mā tētahi putunga nui rawa o ngā pereki ake me ngā whakakitekite whakaoho mauri!



TEL.06-6573-6010

4 Waka Hēra Tirohiro Haere "Santa Maria"



Tirohiro haere i te Whanga o Osaka mā runga waka (45 meneti)

<https://suijo-bus.osaka/english/santamaria/>

5 Te Hōtera o Seagull Tempozan Osaka



Hōtera Pātahi o Universal Studios Japan™

<https://www.hotelseagull.co.jp/>

6 Waka Kawē "Captain Line"

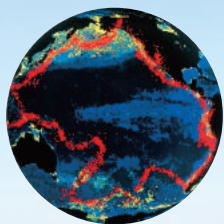


Haere mai i te Tauranga Poti o te Uru o KAIYUKAN ki te Wāpu o Universal City (10 meneti)

<http://www.mmjp.or.jp/Capt-Line/>

He aha te KAIYUKAN **ngā taonga**.

Ring of Fire, Ring of Life.



I ahu mai te mātāpono ārahi o te Kaiyukan mai i tētahi ariā, "te whakairinga whakaaro o te Gaia" i taunakitia e te kaupūtaiao a James Lovelock, e kī ana ko "ngā rauropi katoa me ngā paratopi katoa i tēnei ao he hoā tata, ka mutu ka puta te pūnaha matatini kotahi, whakahaere whaiaro."

Ko te "Ring of Fire" te tātua puia o Kiwa e pae ana i Te Moananui-a-Kiwa. Ka inaki te "Ring of Life" i te kanorau-koiora tino kiota.

Nā ngā huatau e marohitia ana e ēnei "Rīngi" e rua, ka hangaia anōtia e Kaiyukan te taiao tūturu puta noa i Te Moananui-a-Kiwa ki te āhutatanga taketake ka taea.

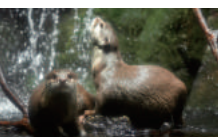
E tino manako ana mātau kia mātua whai whakaaro mai ngā manuhiri katoa ki te tino māpuna me te whakamīharo o te oranga me te hiranga o te taiao tūturu huri noa i te ao.

Ngā Kararehe o Te Moana o KAIYUKAN

Kēti Kauranga

Nā te āhua o te taika timere he pēnei tonu anō nei ka hikoi i raro wai.

Cownose ray, Blotched foxface, me te maha atu.



1 Ngahere o Hapāna

Ka mau tonu te ātaahua o te ngahere o Hapāna mō ngā wāhanga tau e whā.

Ota matihao-itī nō Āhia, mokomoko kaitā nō Hapani, me te maha atu.

2 Ngā Motu o Aleutian

E takoto ana te mekameka Aleutian i tētahi taiao tino uua, tio hoki. Engari kei roto i ngā wai moana e pae ana, ko ngā kai whakamōmona nui rawa. E tautoko ana tēnei ripoinga i ngā momo ika rerekē maha, me te pāwhene whai puia, me ētahi atu manu.

Te pāwhene whai puia, me te maha atu



3 Te Whanga o Monterey

Tūhuratia te ao o ngā kakerangi o Karepōnia me ngā kēkeno o te Whānga i runga whenua, i raro wai hoki.

Kēkeno o te Whanga me te kakerangi o Karepōnia.

4 Te Whanganui o Panama

He tino mōhio, he hakama hoki ngā koati ki te piki rākau, ā, ka kau haere ngā momo ika o Panama i roto i ngā wai o Panama.

Koati whiore rīngi, Ika taratarā roa, me te maha atu.



6 Te Kōpaka Runga

Ko te kau a ngā kororā ānō nei kei te rere i roto i te wai i te pito tonga o te ao.

Kororā Adelie, kororā Kīngi, me te maha atu.

7 Te Tai-o-Rehua

Ngā aihe taha-mā o Te Moananui-a-Kiwa, he pekepeke i roto i Te Tai-o-Rehua, he tere ki te kau i rō wai.

Aihe taha-mā o Te Moananui-a-Kiwa



8 Te Tokarāngi o Great Barrier

E kīia ana ko ngā tokarāngi ko "puna oranga o te moana". Ka tere te wā i te whakamīharotanga ki te āhua o te taiao!

Ngā momo Butterflyfish me te Dameselfish, me te maha atu.



9 Te Moananui-a-Kiwa

Te Moananui-a-Kiwa ---te moana nui rawa o te ao. Ko te Pioke tohorā me ētahi atu mea ora o te moana e āta kau haere ana i roto i te wai kia whānui ai te ao wai.

Pioke tohorā, Mangopare, Humphead wrasse me te maha atu.

10 Te Moana o Seto

Kei te taha uru o Hapāna te Moana o Seto. Me kimi i ngā wheke noa e whakatā ana i muri i ngā toka, ngā pātiki Bastard e takoto noa ana i te papa moana.

Pāpekeheke, Pirīmi whero, Kourā, me te maha atu.

11 Whakaaturanga e ai ki te Wāhanga Tau

He rerekē ngā mea ora o te moana i konei e ai ki te wāhanga o te tau (e.g. ngū matuku whai urutira nui). He mea tūtohu e ā mātau kaitiaki.

12 Te Takutai o Hire

Ka puta ake tētahi kauka korowhāwhā Hapanihi nunui hei rerenga ārai kiwiwiwi - he whakaaturanga toi tūturu nā te taiao i waihangā.

Ngā korowhāwhā Hapanihi, me te maha atu.

13 Te Moana o Raukawa

Ātaahua te kauhoe a ngā honu Panenui he papaki i ngā pakihau o mua he pēnei i te hoe te āhua. Hāunga i te wā ka ngōki haere atu ngā uwaha ki te onepū whakawhānau ai, ka noho tonu ki rō wai.

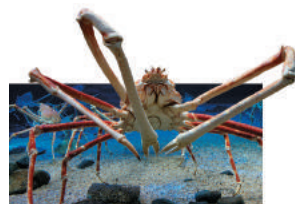
Honu Panenui, Māmo māwhero, me te maha atu.



14 Te Wāhi Hōhonu o Hapāna

Kei roto i tēnei wāhanga ko te Pāpaka pūngāwerewere nunui, te pāpaka nui rawa o te ao, me ētahi atu momo hanga rerekē o te moana.

Pāpaka pūngāwerewere nunui, Isopod kaitā me te maha atu.



Kia mōhio: Ka whakarerekēhia ngā kararehe moana me te kore whakamōhio mai.

15 Wāhi Petipeti hou

Tētahi o ngā kohinga petipeti rongonui puta noa i te motu. Ka mīharo ngā manuhiri ki te atahua o te whakaaturanga.

Petipeti marama, Petipeti parauri, me te maha atu.



16 Whai wāhi atu ki te rohe raki tio Kōpaka Raro

Tirohia ngā tio kei runga i te tuanui me te tūtaki i ngā kēkeno Rīngi e menemene ana mai i te taika kōpuku o runga. Pā ki te anu mātiao o te Kōpaka Runga me te rongō i te kakara o ngā kēkeno Rīngi me te whakarongo atu e kau haere ana i roto i te hukapapa me te papaki o ngā pakihau.



17 Rongō ā-taringa, ā-ihu, ā, ka mīharo koe Ngā Moutere o Whokarangi (Ngā Marahina)

Rongō ā-taringa, ā-ihu i ngā kororā Rockhopper e noho ana i konei. Ka mīharo ki ngā kororā e tere kau haere ana i rō wai, te pekepeke haere i ngā toka, i mua tonu i a koe.



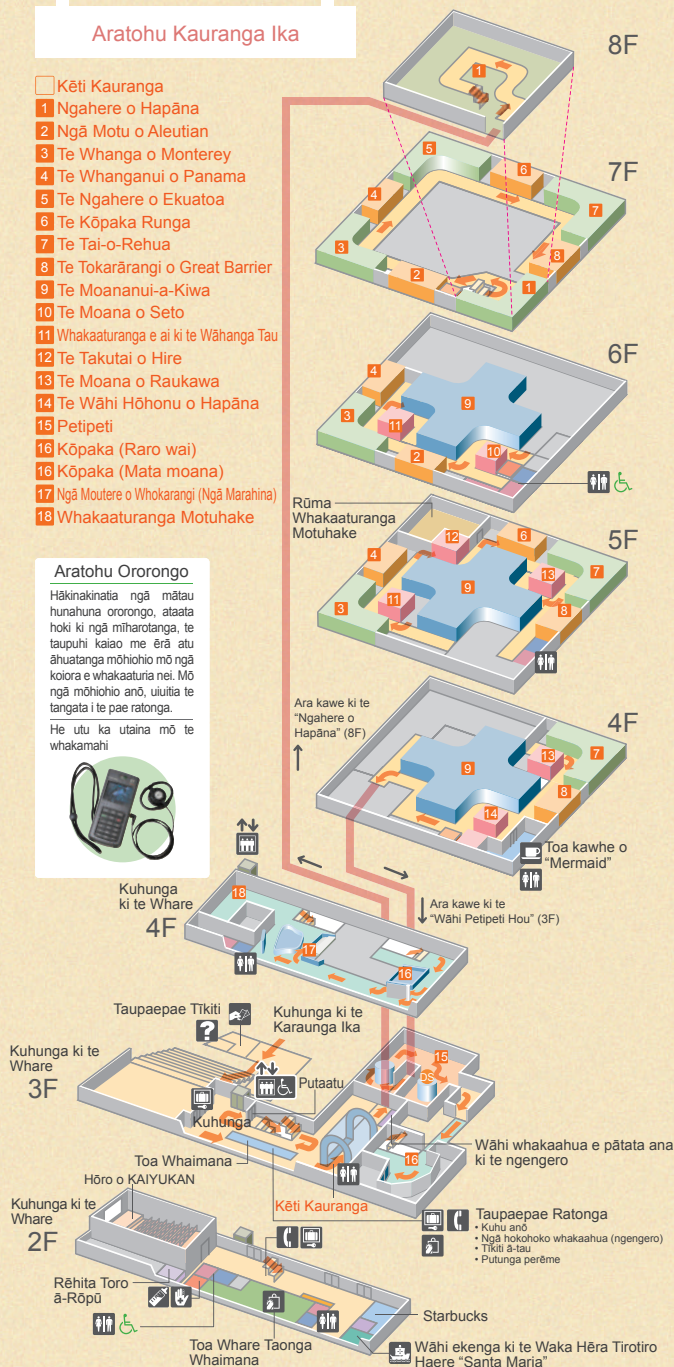
Aratohu Kauranga Ika

- Kēti Kauranga
- 1 Ngahere o Hapāna
- 2 Ngā Motu o Aleutian
- 3 Te Whanga o Monterey
- 4 Te Whanganui o Panama
- 5 Te Ngahere o Ekuatoa
- 6 Te Kōpaka Runga
- 7 Te Tai-o-Rehua
- 8 Te Tokarāngi o Great Barrier
- 9 Te Moananui-a-Kiwa
- 10 Te Moana o Seto
- 11 Whakaaturanga e ai ki te Wāhanga Tau
- 12 Te Takutai o Hire
- 13 Te Moana o Raukawa
- 14 Te Wāhi Hōhonu o Hapāna
- 15 Petipeti
- 16 Kōpaka (Raro wai)
- 16 Kōpaka (Mata moana)
- 17 Ngā Moutere o Whokarangi (Ngā Marahina)
- 18 Whakaaturanga Motuhake

Aratohu Ororongo

Hākinakitia ngā mātua hunahuna ororongo, ataata hoki ki ngā miharotanga, te taupuhi kaiāo me ērā atu āhuatanga mōhihio mō ngā kōiora e whakaaturia nei. Mō ngā mōhihio anō, uiuitia te tangata i te pae ratonga.

He utu ka ulaina mō te whakamahi



- ↑↓ Ararewa
- Ⓜ Ngā mōhihio
- 📄 Pouaka rokiroki whakahaere ā-uka
- 👤 Kete whakaora
- 📞 Waea utu
- 📄 Rūma whāngai pēpi
- ♿ Wharepaku
- 👤 Toa Whare Taonga Whaimana

Me mātua whiwhi i a koe tētahi pani-ringa i tō putanga hei kuhu mai anō ki te kauranga ika i te rā kotahi.